

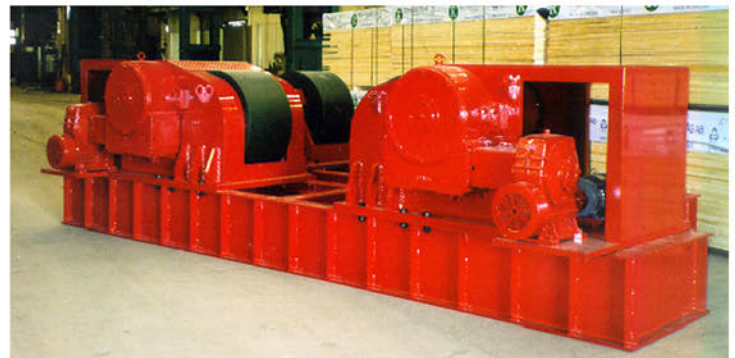
### RWPS500/500-31-FM-WE

**Harbach Positioning** rotators are a robust heavy duty design built to withstand the harsh and rugged environments expected in the world of welding and fabrication requirements. Our proven design uses 900mm diameter 500mm width, steel wheels crowned and hardened mounted onto a cast steel drum for durability and superior traction.

The powered drive unit drives all wheels synchronized using the AC gear motors via the latest inverter control. A hand held low voltage control pendant on a 10 meter cable provides the operator with full control of the rotator including a potentiometer for varying the speed, forward/reverse and stop.

All **Harbach Positioning** rotators are grit blasted to SA 2.5 for all structural steel and polyurethane paint work ensuring that your investment provides you with many years of reliable, trouble-free use.

The idler roll has the same dimension to match the powered drive unit. See GA drawing attached.



### Power rolls specifications

**Model:** RWPS500/500-31-FM-WE

**Load Capacity:** 500 metric ton (1 power & 1 idler)

**Rotation Capacity:** 500 metric ton (1 power)

**Rotation Speed:** 166 to 1660mm/min

**Vessel diameter:** Min 1250mm to Max 10000mm (at 3100mm C-C) @ 45° included angle

**Incoming supply:** 380-415V/3Phase/50/60/hz (specify input voltage when ordering)

**AC Inverter:** 22 kW

**Motor rating:** 2 x 11 kW AC Motors

**Control voltage:** 24V low voltage control

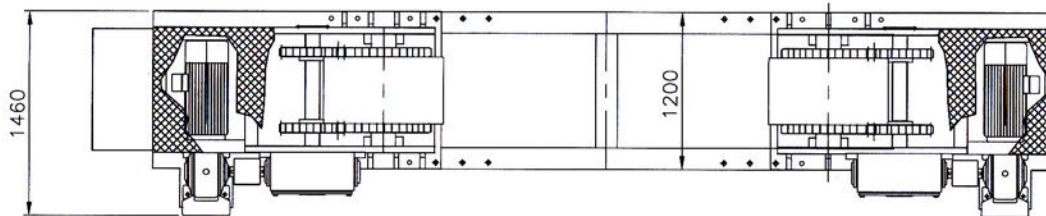
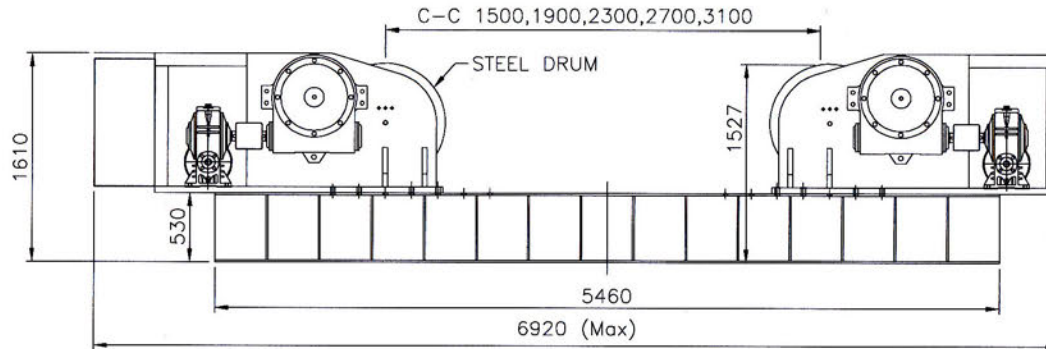
**Weight:** 13,200 Kg Drive Unit

10,100 Kg Idler Unit

RWPS500/500-31-FM-WE (500 Tonnes) (Steel Wheeled)

Specification for Rotator

1	Model	500/500
2	Capacity (Loading)	250 metric tons
3	Capacity (Turning)	500 metric tons
4	Vessel Size (Min.)	Ø1207mm at 90° Included Angle
5	Vessel Size (Max.)	Ø11063mm at 30° Included Angle Ø7186mm at 45° Included Angle Ø5285mm at 60° Included Angle
6	Tyre Type and Size	Steel, Ø36"x20"
7	Electrical Panel	Yes
8	Roller Speed	166 to 1660mm/min at 5 to 50Hz
9	Incoming Supply	380V-3P-50Hz
10	Control Voltage	24Vac
11	Roller Drive Control	22kW AC Inverter
12	Control Means	Via Push Button Pendant c/w 10m Cable
13	Roller Drive Motor	2 x AC11KW c/w Force Cooling
14	Travelcar (Bogie)	N.A.
15	Travelcar Speed	N.A.
16	Surface Preparation	Gritblast to SA2.5
17	Painting	2 coats Zinc Phosphate, 1 coat Polyurethane
18	Color	RAL 3003 Red
19	Qty	T.B.A

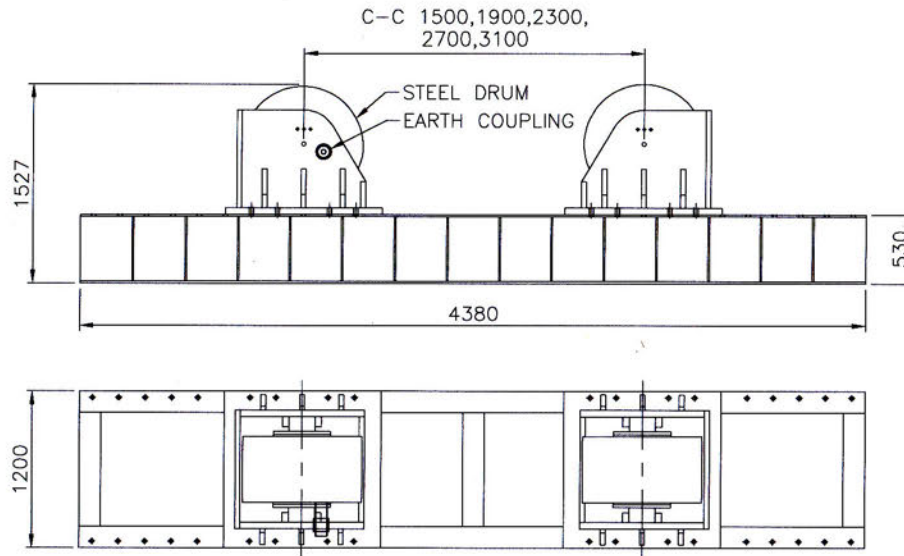


ALL DIMENSIONS IN MM, UNLESS OTHERWISE SPECIFIED.

			PROJECT/MODEL :	500/500
			CLIENT :	-
DRAWN	NAME	DATE	DWG. NAME :	ROTATOR GENERAL ARRANGEMENT
APPROVED			DWG. NO. :	500,500
			SCALE:	N.T.S.
			REVISION:	0
			SHEET NO.:	1 OF 1

Specification for Rotator

1	Model	500
2	Capacity (Loading)	250 metric tons
3	Capacity (Turning)	N.A.
4	Vessel Size (Min.)	Ø1207mm at 90° Included Angle
5	Vessel Size (Max.)	Ø11063mm at 30° Included Angle Ø7186mm at 45° Included Angle Ø5679mm at 60° Included Angle
6	Drum Type and Size	Steel, Ø36"x20"
7	Electrical Panel	N.A.
8	Roller Speed	N.A.
9	Incoming Supply	N.A.
10	Control Voltage	N.A.
11	Roller Drive Control	N.A.
12	Control Means	N.A.
13	Roller Drive Motor	N.A.
14	Travelcar (Bogie)	N.A.
15	Travelcar Speed	N.A.
16	Surface Preparation	Gritblast to SA2.5
17	Painting	2 coats Zinc Phosphate, 1 coat Polyurethane
18	Color	RAL 3003 Red
19	Qty	T.B.A



PROJECT/MODEL :		500	
CLIENT :		-	
DRAWN	NAME	DATE	SCALE: N.T.S.
APPROVED			REVISION: 0
DWG. NAME : ROTATOR GENERAL ARRANGEMENT		SHEET NO: 1 OF 1	
DWG. NO. :			